

# OLSO Calibration Tube

## Function

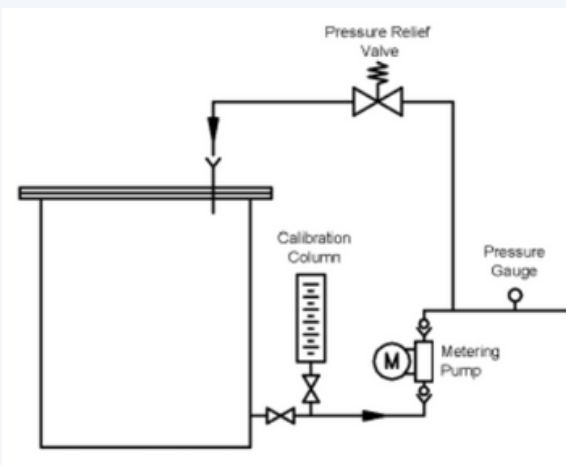
OLSO Calibration Tubes are designed for determining and calibrating flowrate of pump discharge. It is widely used in the chemical injection system, dosing system, etc. With robust construction, OLSO is available in clear PVC tube or glass tube protected by stainless steel providing information in mL or gph (custom request is available). Ventings are available in plug, tube or open connection.



## Material

The tube material is available in clear PVC, Glass covered by clear tube or Glass protected with Stainless steel

## Operation



OLSO calibration tubes are installed in the suction line of the pump with isolation valve in the inlet. For the calibration of a chemical feed system, fill OLSO Calibration Tube with fluid from the tank to the top mark of scaling unit. Close the tank outlet valve and start the pumps. Draw down the fluid in the OLSO calibration tube for 30 seconds to 1 minutes (subject to requirement) then stop the pump. Pump stroke can be adjusted to reach the required flow rate.

## Features

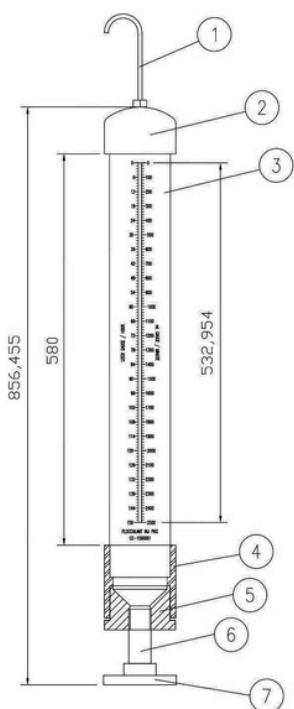
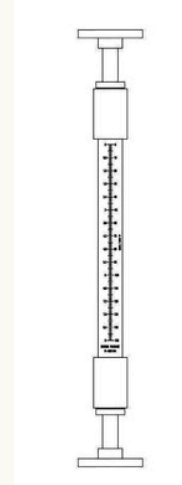
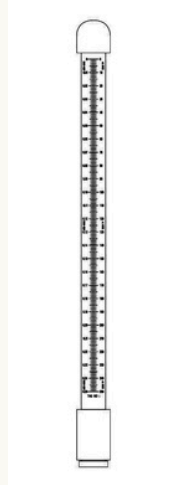
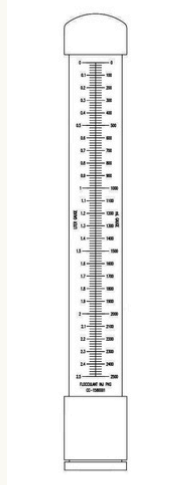
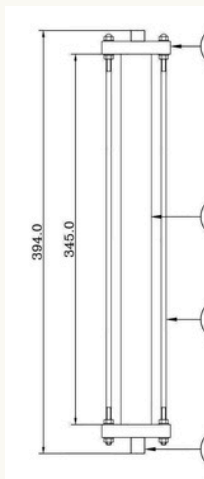
- Robust design with Low Cost
- Available in PVC or Glass tube material for chemical containment suitability.
- Rough protection (in stainless steel bracket)
- Available in flange/ threaded connection
- Large and easy scale reading
- Customize scaling units in mL, gpm, gph, etc
- Calibration certificate is available (upon request)\*



\*Calibration certificate is provided by third party

# Sketch and Details

## Sketches



No	Part name	Material	Remark
1	Vent Tube	SS304/SS316/PVC	Available with flange or threaded connection
2	Cap	SS304/SS316/PVC	-
3	Calibration Tube	Clear PVC	Stainless steel bracket protection is available
4	Coupling	SS304/SS316/PVC	-
5	Reducer Insert	SS304/SS316/PVC	-
6	Spool Pipe	SS304/SS316/PVC	Available in sch40, 80, etc
7	Inlet/Outlet	SS304/SS316/PVC	Available with flange or threaded connection